

MANWELL INDUSTRY



THE NAME OF
EXCELLENCE

CONTACT INFORMATION

Address:

Pakistan: Mohallah Muhammad Pura PO Khas Ugoki/Sialkot/Pakistan

Turkiye: Zafer Mahallesi, Gümüş Sk. No:2 Kat:5, 34197Yenibosna

/Bahçelievler/Istanbul/Turkey

Mobile: +92-335-1681198

Email: info@manwellindustry.com

Email: manwellindustry@gmail.com

Web: www.manwellindustry.com

About Us:

Manwell Industry is a reliable manufacturers and supplier of Sports Gear, Sports Wear, Fitness Wear, Garments, Summer Wear, Leather Collections, Work Wear.

OUR MISSION STATEMENT:

We want to create a product that is more than just a logo on a piece of Apparels. We want it to be meaningful and worn with pride which is actually useful on and off the fitness ground.

THE MANWELL GUARANTEE:

Here at Manwell Industry, we pride ourselves on our cutting edge designs using the latest textile material. This constant innovation ensures that all of our products, and the people wearing them, achieve their maximum potential, and give their best performance.



MANWELL
INDUSTRY

WWW.MANWELLINDUSTRY.COM



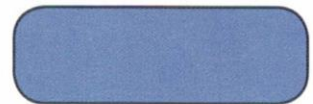
Dyna-Dry™ - 100% Polyester
 • Flat-Backed Mock Mesh
 • Moisture Wicking
 • Performance Knit



Dry-Tec™ - 100% Polyester
 • Micro Fiber • Soft Hand
 Breathable • Moisture Wicking



Aerofiber - 92% Polyester / 8% Spandex • Performance Open Hole Stretch Mesh • Moisture Wicking



Flex Dry - 90% Polyester / 10% Spandex - Performance • Body Forming • Mechanical Stretch



Air Mesh - 100% Polyester
 • Technical Track Knit Mesh
 • Classic Ice Hockey Fabric
 • Breathable & Strong



Pin Hole Mesh - 100% Polyester
 • Pin Hole Mesh Provides Functionality and Performance
 • Strong & Breathable



Rip Dry - 100% Polyester Square-Dance fabric • High performance Dry-Time characteristics



Stretch Tec - 91% Polyester / 9% Spandex - 9.5 or 6 oz option • MidWeight and Heavy Performance • Compression New Bounce Back Technology



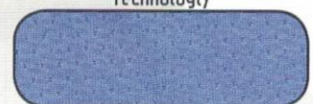
Rice Mesh - 100% Poly Pro Bright-Mesh • Performance Driven



Heavy Dazzle - 100% Polyester
 • Strong and Durable



Heavy Baseball - 100% Polyester
 • Durable • Breathable • Moisture Wicking



Dual Wick - 100% High Tech Closed-Hole Knit Mesh • Can be Sublimated on Both Sides • New High Block Technology

color options: * Due to the difference in the printing process, the displayed colors are not an exact match to the fabric standards



Possible Font options: * Custom fonts welcomed! Custom fonts must be provided when placing your team order

FULL BLOCK

ABCDEFGHIJKLMNOPQRSTUVWXYZ

1234567890

FACET HEAVY

ABCDEFGHIJKLMNOPQRSTUVWXYZ

1234567890

COGUARS

ABCDEFGHIJKLMN**OP**QRSTUVWXYZ

1234567890

FBRush

ABCDEFGHIJKLMNOPQRSTUVWXYZ

1234567890

STAHLSTIFFANY

ABCDEFGHIJKLMNOPQRSTUVWXYZ

1234567890

Possible Team Name Treatments:

FULL BLOCK
arch

FULL BLOCK
arc

FULL BLOCK
shear

FULL BLOCK
flat top
arch

Possible Team Name/Number Treatments:

solid
TEAM

1 stroke
TEAM

5 5

drop shadow
TEAM

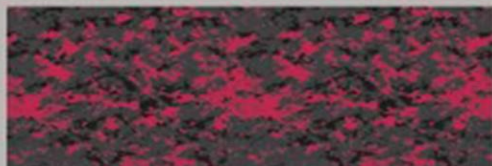
2 stroke
TEAM

5 5



SUBLIMATED SWATCH PATTERNS

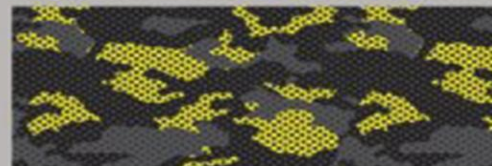
CAMO



DIGITAL CAMO - 3 & 4 COLOR AVAILABLE



TRADITIONAL CAMO - 4 COLOR



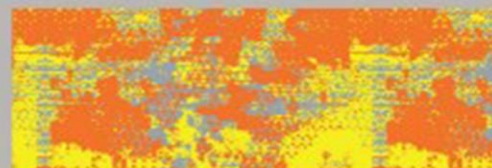
MESH CAMO - 4 COLOR



HONEYCOMB - 4 COLOR



DOT CAMO - 5 COLOR



ALTERNATIVE CAMO - 3 COLOR

GEOMETRIC



GEOMETRY - 3 COLOR



TRIBAL TRIANGLE- 5 COLOR



CHEVERON - 4 COLOR



INTERLOCKING TRI COLOR - 3 COLOR



SHATTER - 4 COLOR



TOWER - 3 COLOR

ABSTRACT



TRIBAL - 2 COLOR



TRIANGLE SQUARES - 4 COLOR



COBRA - 3 COLOR + TONAL 3 COLR



CRACKLE - 2 COLOR



FRACTURE - 50% COLOR OVERLAY



DIAMOND MESH - 2 COLOR



STAND OUT ON THE ICE WITH CUSTOM CAMO DESIGNS & MORE



DANGLE
MI-1796
TRADITIONAL
LACE NECK

COLOR 1:
CAMO



CAMO COLORS:
NAVY, ROYAL,
80% NAVY

COLOR 2:
NAVY



COLOR 3:
WHITE



Matching socks and pant shells available in sizing to accommodate hockey players of all ages. Socks come standard with elasticized top and bottom hem accompanied by a sewn in velcro patch to ensure consistent placement.

Our hockey jerseys are offered in a variety of premium fabrics, are decorated with unlimited custom capabilities and are available in lace neck or v-neck finish. Two ply shoulder finish comes standard, double elbows are available upon request for additional durability.



DANGLE
MI-1797
ICE HOCKEY
SOCKS

COLOR 1:
CAMO



CAMO COLORS:
NAVY, ROYAL,
80% NAVY

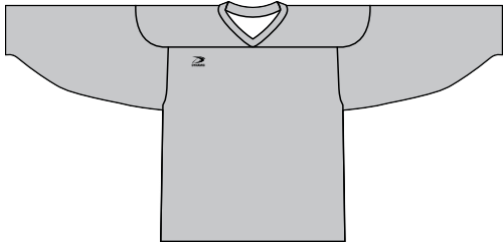
COLOR 2:
NAVY



COLOR 3:
WHITE



SELECT YOUR CUT



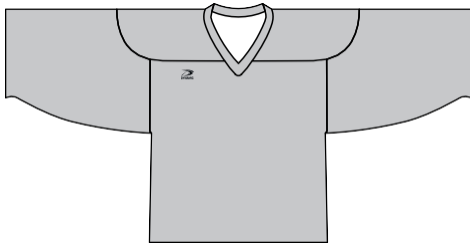
TRADITIONAL V-NECK
MI-1798

- » V-neck with double layer reinforced shoulder yoke
- » Serged seam construction



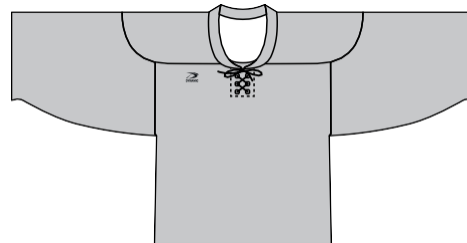
TRADITIONAL LACE NECK
MI-1799

- » Lace neck with double layer reinforced shoulder yoke
- » Serged seam construction



GOALIE V-NECK
MI-1800

- » V-neck with double layer reinforced shoulder yoke
- » Serged seam construction
- » Body length shortened
- » Increased sleeve width



GOALIE LACE NECK
MI-1801

- » Lace neck with double layer reinforced shoulder yoke
- » Serged seam construction
- » Body length shortened
- » Increased sleeve width

RECOMMENDED FABRICS



DYNA DRY

A flat-backed mock mesh, moisture wicking performance fabric.
(100% Polyester)



AIR MESH

Heavy weight, technical track knit mesh, classic ice hockey fabric, durable strong.
(100% Polyester)



AEROFIBER

Light weight, stretchable and breathable, open pin hole mesh. Moisture wicking, four-way stretch, performance fabric.
(90% Polyester / 10% Spandex)



ICING
MI-1802
TRADITIONAL
LACE NECK



CROSS CHECK
MI-1803
TRADITIONAL
LACE NECK



COLOR 1: RED
COLOR 2: NAVY
COLOR 3: WHITE



COLOR 1: WHITE
COLOR 2: BLACK
COLOR 3: RED



FACEOFF
MI-1804
TRADITIONAL
LACE NECK



DANGLE
MI-1805
TRADITIONAL
LACE NECK



COLOR 1: SILVER
COLOR 2: BLACK



COLOR 1: CAMO
COLOR 2: NAVY
COLOR 3: WHITE

CAMO COLORS:
NAVY, ROYAL,
80% NAVY



BLUELINER
MI-1806
TRADITIONAL
V-NECK



COLOR 1: BLACK
COLOR 2: ORANGE
COLOR 3: WHITE



WINGER
MI-1807
TRADITIONAL
LACE NECK



COLOR 1: 20% VEGAS
COLOR 2: RED
COLOR 3: VEGAS



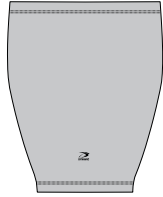
DASHER
MI-1808
TRADITIONAL
V-NECK



COLOR 1: RED
COLOR 2: NAVY
COLOR 3: WHITE



SUGGESTED ADD-ONS



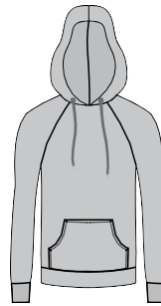
ICE HOCKEY SOCKS

1" covered elastic at top edge. Velcro at center front and back top edge.
Suggested fabric: Air Mesh



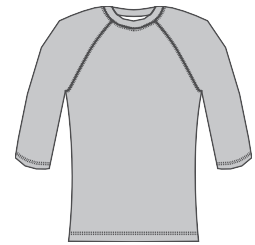
SUBLIMATED HOCKEY SHELL

Fully sublimated shell with ribbed gusset. Center front buckle and built in belt. Designed to go over pant.



PULL OVER HOODIE

Fully lined hood. Raglan sleeves with cuffs. Pouch pocket. Available in light and medium weight fleece.



BASE LAYER

Made of breathable, light weight, moisture wicking fabric. Available in multiple sleeve lengths.





WWW.MANWELLINDUSTRY.COM